

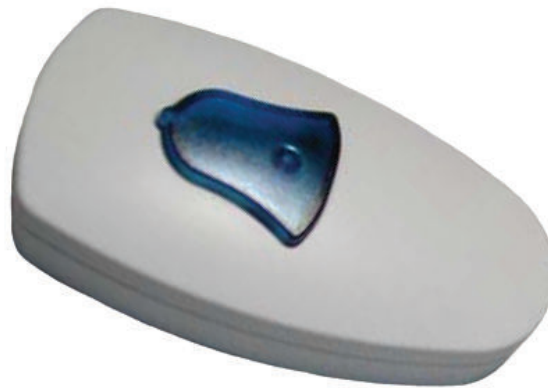
microframe®

SERIES 3093

INSTALLATION & SPECIFICATION GUIDE

ITEM NO: B3093-7010

REVISION DATE: 05/09



Microframe Corporation
604 S. 12th Street
Broken Arrow, OK 74012

Tel: (918) 258-4839
Toll Free: 1-800-635-3811
Website: www.microframecorp.com
E-mail: support@microframecorp.com

B3093-7010



Limited Warranty Agreement

Your Microframe System is warranted against failure due to defects in workmanship or material for a period of one (1) year from the date of purchase. Microframe Corporation will repair or replace any defective unit. Obvious abuse or mishandling of the unit is NOT covered by this warranty.

Merchandise Return

If your Unit does not work satisfactorily, please give us a call. We may be able to clear up the problem by phone. If it becomes necessary to return your Unit to the factory, please observe the following:

1. Place Unit in a sturdy box with sufficient packing material.
2. If requested, include the AC power adapter. It is not necessary to return the cable and connectors unless they are the problem.
3. Return the system insured and prepaid. Microframe is not responsible for shipping damages and losses on returned Units.

Warranty Service

For warranty service, please contact Microframe toll-free at (800) 635-3811. A technician will gladly assist you.

Assistance

For any product assistance or maintenance help, contact Microframe by either calling 1-800-635-3811 or e-mailing us at: support@microframecorp.com.

Safety

Do not install substitute parts or perform any modification to the product without first contacting Microframe.

Warning

All power adapters, line cords, and electrical equipment should be kept out of the reach of children and away from water. (If you are installing cable in an air plenum area, such as a drop ceiling used for air return, you must use plenum-rated cable. The cable supplied from Microframe is rated CL2 and is approved for indoor installation everywhere except plenum areas.)

Life Support Policy

Microframe's products are not authorized for use as components in life support devices or systems without the express written approval of the president of Microframe Corporation. As used herein:

1. Life support devices or systems are defined as systems which support or sustain life, and whose failure to perform when properly used in accordance with instructions for use provided in the labeling, can be reasonably expected to result in a significant injury to the user or any one depending on the system.
2. A critical component is any component of a life support device or system whose failure to perform can be reasonably expected to cause the failure of the life support device or system, or to affect its safety or effectiveness.

Disclaimer

We constantly strive to improve our products. Specifications are subject to change without notice.



Model 3093 Specifications

Features

The 3093 Wireless Pendant Transmitter is designed to directly page security personal and health care staff with the simple push of a button. No installation, No wires, No hassle. Simple and easy to operate. Great solution for schools, churches, government offices, medical staff, and many more.



Model 3093 Specifications

Paging Format	POCSAG
Frequency	457.575MHz 1 Channel Crystal Controller
Baud Rate	512bps / 1200bps
Message.....	Numeric & Alphanumeric
Number of Messages.....	1 Message (Max 40 Character)
RF Output	10 mW (+10.0 db)
Modulation	FSK, NRZ
Deviation	4.5Khz
Stability.....	±10 ppm
Battery	Type 23A Alkaline Battery
Battery Life.....	aprox. 240 days (3x per day)
Programming I/O (optional).....	via USB with P/C
Size	3.15in X 1.65in X .71in
Housing Color	White (Blue Button)
Pager Weight	34gs (with battery)
Range.....	500 ft.



POCKET PAGER SPECIFICATIONS

On-Premise Paging

Features

The Scope Pocket Pager is designed to work with the 3093 Wireless Pendant, MultiPage or DataPage family of on-premise transmitters.

The pager can show unlimited numeric messages sent by the transmitter. Optionally, the pager can show up to three factory pre-programmed text messages corresponding to the beep type specified.



Pocket Pager

Pocket Pager Specifications

Distance Range	500 ft.
Power	Requires one AAA battery (included)
Size.....	2.5 x 1.5 (1.75 with holster)

Support and Sales
800-635-3811

Microframe® Corporation
www.microframecorp.com

PO Box 1700
Broken Arrow, OK 74013

POCKET PAGER

1.0 Turning On the PAGER

Hold down the LARGE GRAY BUTTON until the Pager comes on.

1.1 Receiving a Page

The Pocket Pager will start to vibrate when it is paged. No action is necessary on the receiving end. The Pager will stop vibrating after approximately eight seconds. If the user would like to stop the vibration before the eight seconds, simply press the LARGE GRAY BUTTON. If a numeric message is sent to the Pager, the message will be visible on the Pager's LCD screen until the Pager stops vibrating. To view the message after the Pager has stopped vibrating, press the LARGE GRAY BUTTON once.

1.2 Manual PAGER Turn-Off

Press the DOWN ARROW BUTTON. The words "PGR OFF" will appear on the LCD screen. Press the LARGE GRAY BUTTON once to confirm.

1.3 Changing Alert Mode

To change Alert Mode, press the down arrow button until you see "Set Alert." Press the LARGE GRAY BUTTON followed by the down arrow button until you see the desired option. Press the LARGE GRAY BUTTON once to confirm.

1.4 Power Checking

When the battery level is low, a low-battery symbol will appear at the bottom of the Pager screen.

1.5 Lighting Function

Pressing the UP ARROW BUTTON for two seconds will turn on the backlight on the LCD screen. The light will shut off automatically after approximately 10 seconds, or the user may turn the light off manually by pressing the UP ARROW BUTTON once.

1.6 Caution

- a) The Pager is made up of LCD and precision elements. Avoid water and high temperature.
- b) Remove the battery if the Pager will not be in use for a long period of time.
- c) If the Pager is not working properly, do not dismantle or repair it yourself. Call Microframe for technical service.

microframe®

Microframe Corporation
604 S. 12th Street
Broken Arrow, OK 74012

Tel: (918) 258-4839
Toll Free: 1-800-635-3811
Website: www.microframecorp.com
E-mail: support@microframecorp.com