



## **SERIES 1510 INSTALLATION & SPECIFICATION GUIDE**

**ITEM NO: D1510-7010  
REVISION DATE: 10/10**



Microframe Corporation  
604 S. 12th Street  
Broken Arrow, OK 74012

Tel: (918) 258-4839  
Toll Free: 1-800-635-3811  
Website: [www.microframecorp.com](http://www.microframecorp.com)  
E-mail: [support@microframecorp.com](mailto:support@microframecorp.com)

**D1510-7010**



# VoiceBox and Take-A-Number Displays



Stand-Alone



VoiceBox and 5120



VoiceBox and 5130

## BENEFITS

- Streamline customer flow with the Take-A-Number System
- Advertise to a captive audience using the LCD Display
- Promote your product and services with product specific ads
- Reduce cost with increased employee productivity
- Low-maintenance, easy to install, and easy to operate
- Improve customer service by eliminating waiting lines

## FEATURES

- Widescreen design for improved viewing
- Wallmount and desktop compatible
- User-friendly menu system
- Many others...

## LCD TAKE-A-NUMBER ACCESSORIES

- B80 Ticket Dispenser
- Take-A-Number Sign
- B80 Floor Stand
- B80 Counter Top Stand
- 2- and 3-digit Tickets (white and colored)
- Remote Control
- Push Buttons

## LCD TAKE-A-NUMBER DISPLAY

Microframe Model 5320 - LCD Take-A-Number System is the first of its kind on the market. Microframe took the popular Take-A-Number System and combined it with an LCD Digital Picture frame to bring you the LCD Take-A-Number System. This provides a effective solution for managing customer service flow and the ability to advertise, inform, and educate your customers with one product. Supplement your advertising, increase brand awareness... Your options are endless!

From the factory the display is preprogrammed with 5.5-inch tall digital numbers viewable from up to 125 feet. The LCD Take-A-Number System can be displayed on a counter top (similar to a computer monitor) or hung on the wall with a bracket (provided). Microframe designed the LCD Take-A-Number System to utilize wired and wireless controls. For your convenience, Microframe has included each display with a wireless remote, 2 brass push buttons, and 40-feet of wire (free of charge) to connect to the back of the display.

## WIRELESS OPERATION

With our convenient remote control you can advance the numbers, go back a number, or reset the numbers. Multiple remotes can be utilized within line of sight for up to 30 feet.

## WIRED OPERATION

Each LCD display includes two push buttons with 40-feet of wire (free of charge) for manual/wired operation. Additional push buttons and wire may be added as needed.

---

## Limited Warranty Agreement

---

Your Microframe System is warranted against failure due to defects in workmanship or material for a period of one (1) year from the date of purchase. Microframe Corporation will repair or replace any defective unit. Obvious abuse or mishandling of the unit is NOT covered by this warranty.

---

## Merchandise Return

---

If your Unit does not work satisfactorily, please give us a call. We may be able to clear up the problem by phone. If it becomes necessary to return your Unit to the factory, please observe the following:

1. Place Unit in a sturdy box with sufficient packing material.
2. If requested, include the AC power adapter. It is not necessary to return the cable and connectors unless they are the problem.
3. Return the system insured and prepaid. Microframe is not responsible for shipping damages and losses on returned Units.

---

## Warranty Service

---

For warranty service, please contact Microframe toll-free at (800) 635-3811. A technician will gladly assist you.

---

## Assistance

---

For any product assistance or maintenance help, contact Microframe by either calling 1-800-635-3811 or e-mailing us at: [support@microframecorp.com](mailto:support@microframecorp.com).

---

## Safety

---

Do not install substitute parts or perform any modification to the product without first contacting Microframe.

---

## Warning

---

All power adapters, line cords, and electrical equipment should be kept out of the reach of children and away from water. (If you are installing cable in an air plenum area, such as a drop ceiling used for air return, you must use plenum-rated cable. The cable supplied from Microframe is rated CL2 and is approved for indoor installation everywhere except plenum areas.)

---

## Life Support Policy

---

**Microframe's products are not authorized for use as components in life support devices or systems without the express written approval of the president of Microframe Corporation.** As used herein:

1. Life support devices or systems are defined as systems which support or sustain life, and whose failure to perform when properly used in accordance with instructions for use provided in the labeling, can be reasonably expected to result in a significant injury to the user or any one depending on the system.

2. A critical component is any component of a life support device or system whose failure to perform can be reasonably expected to cause the failure of the life support device or system, or to affect its safety or effectiveness.

---

## Disclaimer

---

We constantly strive to improve our products. Specifications are subject to change without notice.

# Table of Contents

Table of Contents .....	3
Parts and Features .....	4
Wiring .....	5
Dip Switch Settings .....	7
Audio File Setup .....	8
Drill Templates .....	10

## Parts and Features

### Parts List:

1. VoiceBox (A)
2. 20' 5 Cond Wire (not pictured)
3. Power adapter with 20' wire (not pictured)
4. Manual (not pictured)

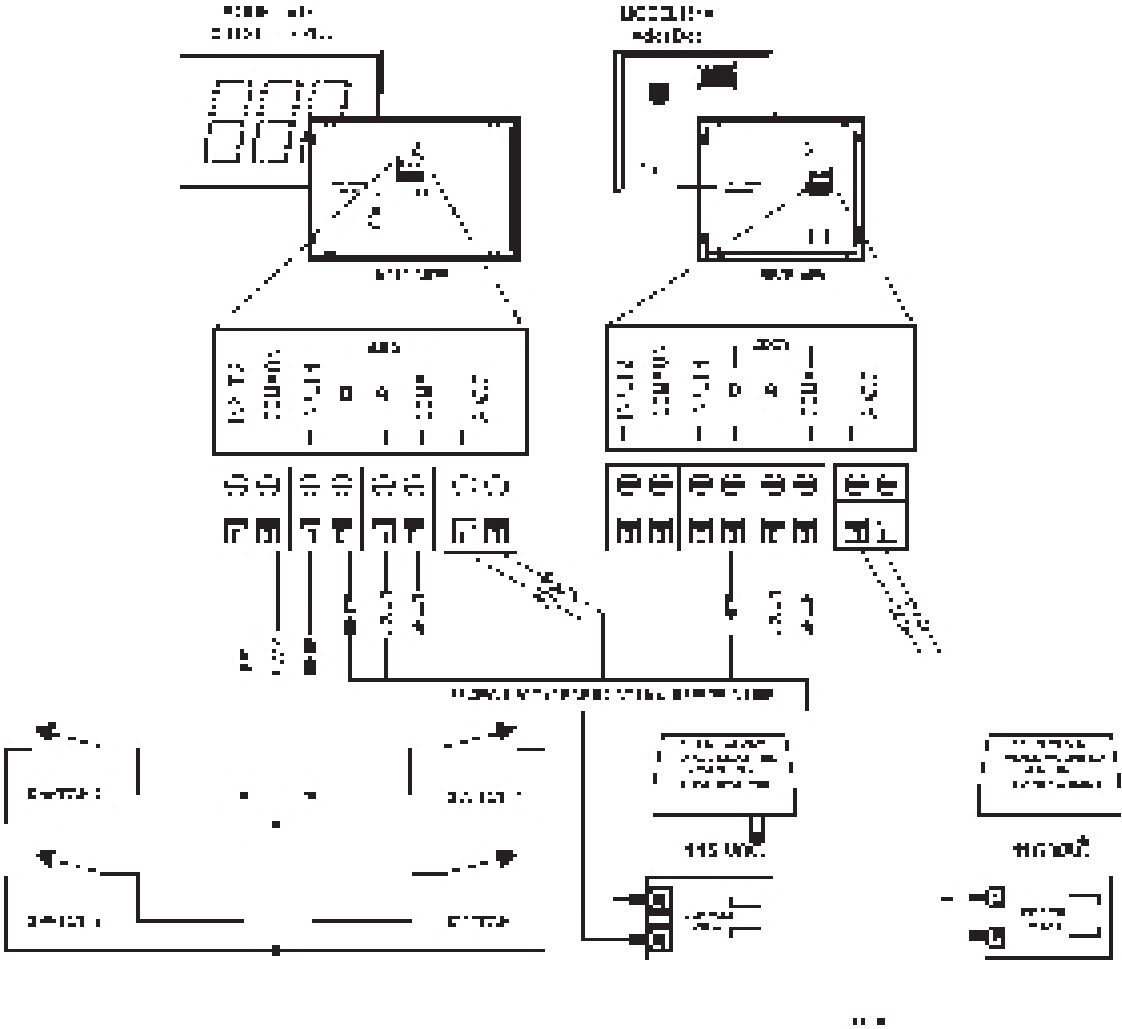
(A)





# Wiring VoiceBox

This figure shows how to wire the VoiceBox to a display using a separate power adapter.



## Dip Switch Options

There are 4 dip switches on the back of the unit that will set the actions of the VoiceBox when it is activated.

Switch 1: When this switch is on, the VoiceBox will play the chime.wav audio file only.

Switch 2: When this switch is on, the VoiceBox will count up to 999 (used for 3 digit displays.)  
When the switch is off, the VoiceBox will count up to 99 (used for 2 digit displays.)

Switch 3: Controls the post-number message, "Thank you."

Switch 4: Controls the pre-number message, "Now serving..."

### **Normal Operations.**

When you change the number on your Take-a-Number display, the VoiceBox will play the corresponding audio file.

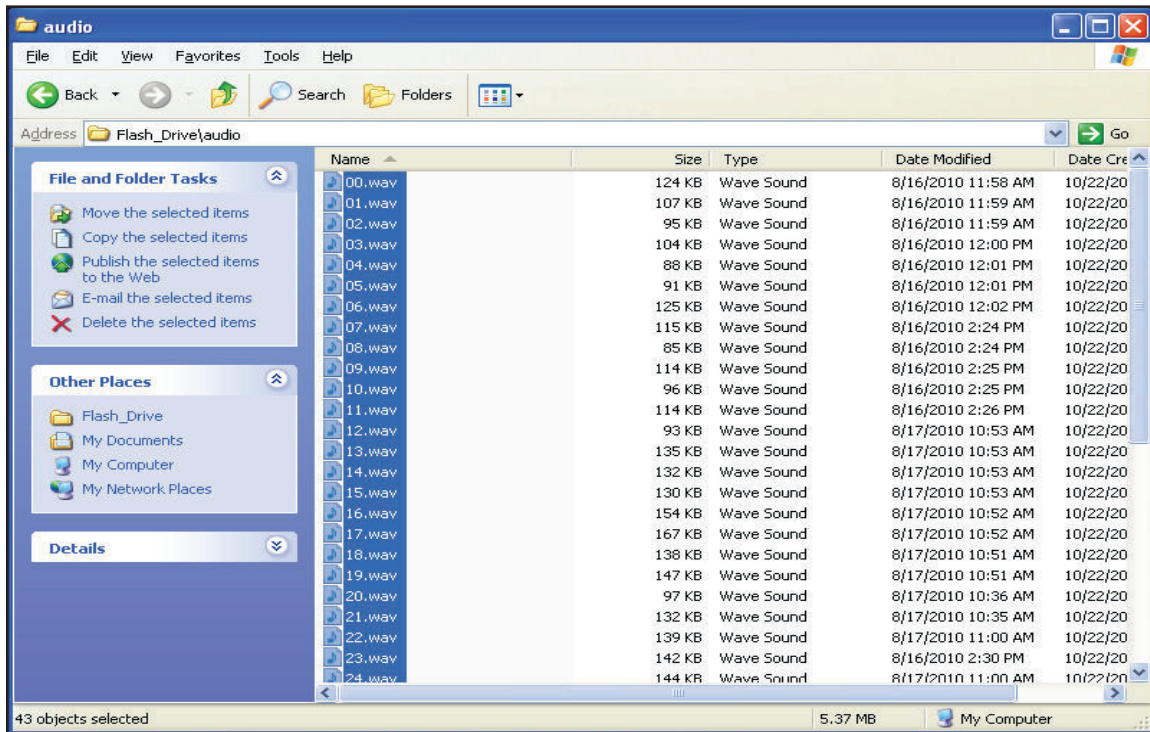
## Changing Audio Files

When setting up a USB drive, the location of files is very important. To install new audio files onto the VoiceBox, place a folder within the root directory of your flash drive named "audio" (all lower case letters with no quotations.) You can put the audio files of your choice in this folder. The audio files will need to be named with the corresponding number (00.wav, 01.wav... 99.wav, 100.wav, 200.wav, and so on.)

The chime audio file will be named "chime.wav".

Hello message audio file is named "prenum.wav".

Thank you message audio file is named "aftnum.wav".



To download the default numbers, go to [www.microframecorp.com](http://www.microframecorp.com) and click on "Downloads." These files will need to be unzipped and then transferred to your USB device.

By using your USB device, you can easily install your audio files in the VoiceBox. Once you have your audio files on your USB device, simply plug in your VoiceBox, then wait for the power light to flash slowly (this could take up to 1 minute.) Once the power light is flashing slowly, plug in your USB device. After a few seconds, the power light should start flashing quickly (this indicates the files are being copied.) Once the VoiceBox is done reading the USB device, unplug it (the power light starts to blink slowly when it is done reading the USB device.) The audio files will be on both the USB device and the VoiceBox. Also the old audio files should be compressed and located in the root directory of the USB device.



# Model 1510 Specifications

## Stand-Alone Displays

### Features

The D1510 Series can be stand-alone or intergrated with a 2 or 3-digit intelligent LED display with infrared capabilities. This display has two inputs for buttons or logic controls and a communications link for communicating with other displays. Displays are powered by a 24-Volt AC adapter (included).



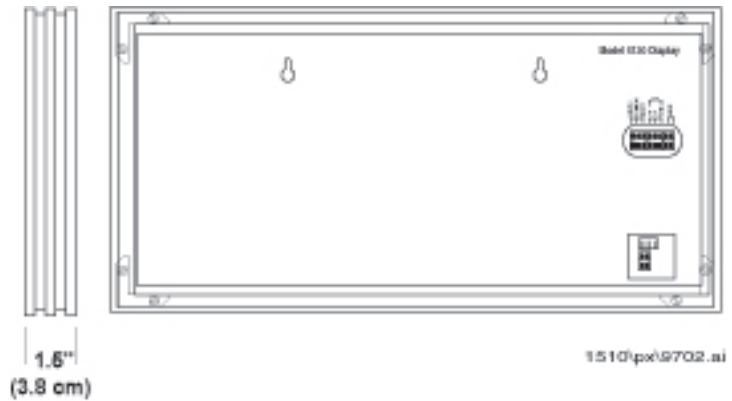
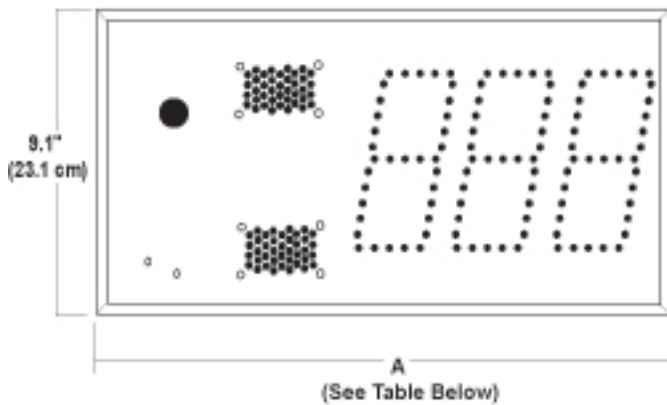
1510



5120XXCX



5130XXCX



### Model 1510 Specifications

Voltage Input Requirements .....	24 volts AC or DC		
Character Height .....	5.5 Inches		
Character Viewing Distance .....	125 Feet		
Temp.....	-20°C to 60°C (-4°F to 140°F)		
Case .....	Aluminum Extrusion		
Color.....	Black Frame w/ Dark Red Plexiglas Faceplate		
Environment .....	Indoor Use Only		
Display Size.....	<b>Stand-Alone</b>	<b>2-Digit</b>	<b>3-Digit</b>
Power Requirements.....	9 Watts	10 Watts	11 Watts
Weight .....	2.75 lbs	4.1 lbs	4.25 lbs
Width "A" Dimension Inches.....	9.8"	18.2"	21.6"
Width "A" Dimension Centimeters....	24.9 cm	46.23 cm	54.87 cm

Support and Sales  
**800-635-3811**  
 Microframe® Corporation  
[www.microframecorp.com](http://www.microframecorp.com)

P.O. Box 1700  
 Broken Arrow, OK 74013

# Drill Templates



**microframe®**

Microframe Corporation  
604 S. 12th Street  
Broken Arrow, OK 74012

Tel: (918) 258-4839  
Toll Free: 1-800-635-3811  
Website: [www.microframecorp.com](http://www.microframecorp.com)  
E-mail: [support@microframecorp.com](mailto:support@microframecorp.com)