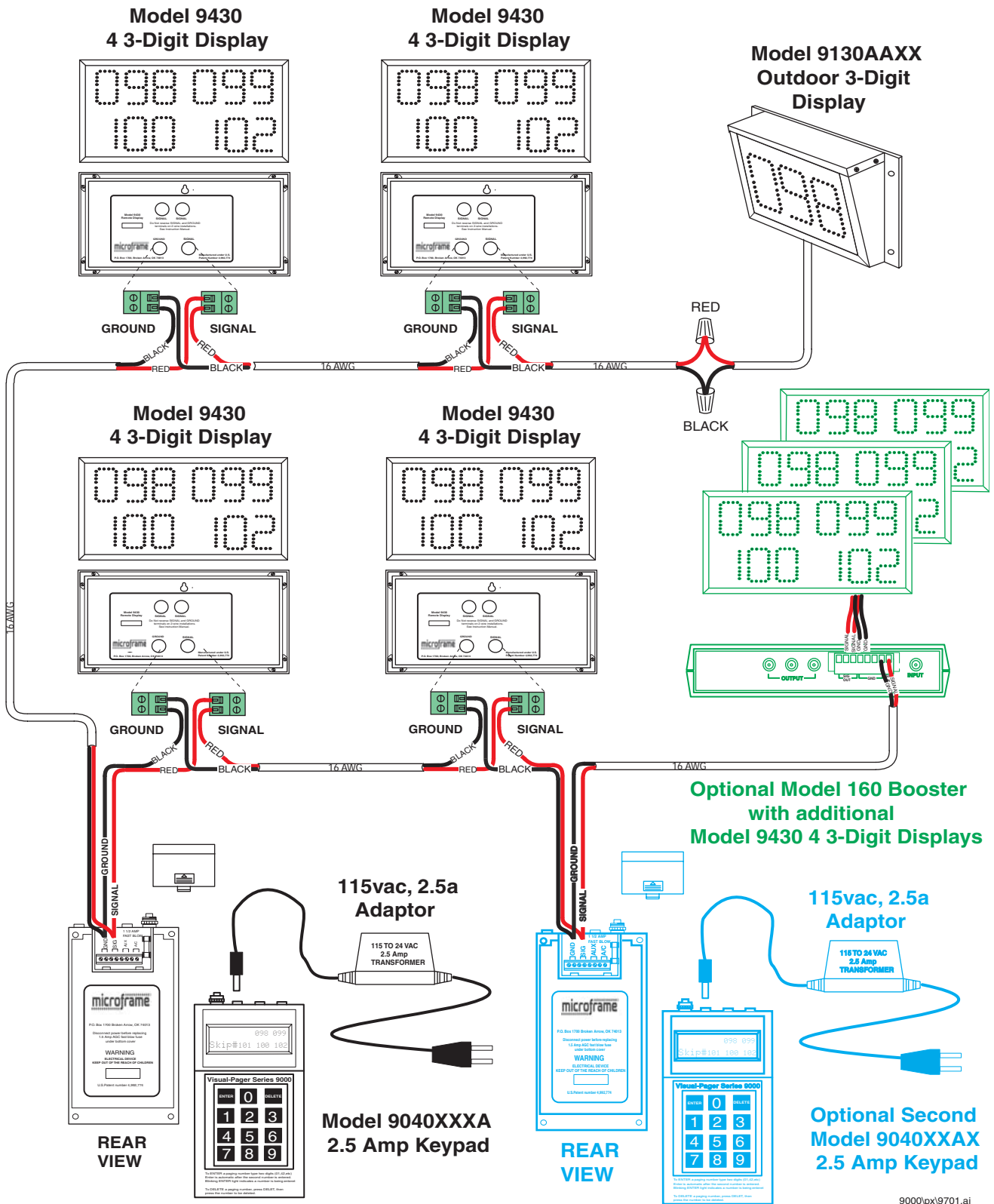


# VISUAL-PAGER CONNECTION DIAGRAM



9000px\9701.ai

The VISUAL-PAGER System is very easy to install if connected as shown above. One AC Adaptor next to the Keypad powers the entire system. Extensions and additions can easily be made by using locally purchased 18 AWG wire. For cable distances over 200 feet refer to the **Cable Length Chart**. The system may be connected in other configurations. For example, additional Keypads may be connected to each other then routed to the Displays or the closest Display as shown. The important issue is to make sure all Signals are connected to Signal and Grounds are connected to Ground.